

# Coconut Rhinoceros Beetle

## Best Management Practices for O'ahu

### MULCH

- Chip green waste on site & transport to dump site immediately.
- Do not hold material in trucks overnight.
- Spread mulch **2 inches or less**.
- If mulch and green waste piles cannot be removed:
  - turn piles once a month and check for CRB.
  - keep mulch (including bags) in sealed containers.



### PROPER DISPOSAL AND SANITATION

- Do not move green waste from infested to un-infested areas.
- Inspect trucks, buckets & tools for hitchhiking pests.
- Dump green waste at approved sites listed below:

#### Hawaiian Earth Products

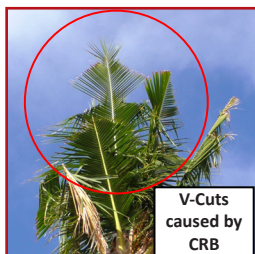
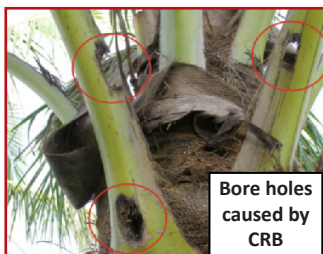
Waimanalo 41-740 Mokulama St. (808) 208-1121

Wahiawa 65-1101 Wilikina Dr. (808) 682-5895

Kapolei 91-400 Malakole Rd. (808) 682-5895

### REPORT

Suspect CRB damage, beetles, and larvae should be reported to the CRB Response at **643-PEST (7378)** or email: **BeetleBustersHI@gmail.com**



For the latest information about CRB, visit:  
<http://hdoa.hawaii.gov/pi/main/crb/>

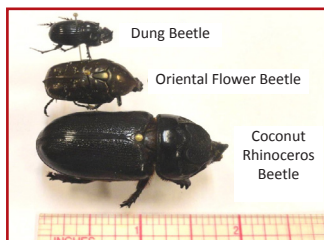
# Coconut Rhinoceros Beetle

## Best Management Practices for O'ahu



CRB are about 2-2.5 inches long

Detected in 2013, Coconut Rhinoceros Beetle (CRB) is the largest beetle on O'ahu. Native to Southeast Asia, CRB has invaded the Western Pacific Region. Early detection and containment are essential to prevent the spread of CRB throughout Hawai'i.



*Oriental Flower Beetle is a common look-a-like for CRB. However, it's only 1 inch long, has no horn, and is active during the day.*

CRB grubs (larval stage of beetles) can grow up to 3 inches long, but look similar to the Oriental flower beetle grubs in their smaller stages. Grubs live in decaying material like dead trees, compost, and mulch.

Below are some key differences:



*CRB grubs crawl on their sides in a C-shape.*



*Oriental Flower Beetle grubs straighten out and crawl on their backs.*

CRB have no line



Oriental Flower Beetle have line on raster



Coconut Rhinoceros Beetle-large head



Oriental Flower Beetle-small head