

WANTED

MICONIA

Call 808-266-7994



Miconia naturalizing in 'Āhuimanu



Landslide in Tahiti caused by dense miconia forest



Aerial view of miconia

WHAT IS IT?

- Miconia (*Miconia calvenscens*), a Hawai'i State noxious weed, is a fast-growing invasive tree native to Mexico, Central and South America.
- Miconia can reach heights of up to 50 feet, with large, velvety green oval leaves that have 3 obvious parallel leaf veins and dark purple undersides.
- Miconia has very small seeds that can last in the soil for 16 years!
- Miconia prefers wet areas and is able to grow in dense, shady forest with low light levels.

WHY IS IT A PROBLEM?

- Miconia forms thick stands, shades out native plants, and completely takes over moist and wet forests.
- Miconia grows quickly and produces millions of seeds that are spread by wind, birds, contaminated dirt, muddy shoes, clothing, equipment, or vehicles.
- Miconia acts as an "umbrella" over a watershed forest and its shallow root systems promote erosion, potentially reducing the amount of rainwater that seeps into O'ahu's aquifers.

WHO IS OISC?

- The O'ahu Invasive Species Committee (OISC) is a multi-sector partnership protecting O'ahu from invasive plants and animals that threaten our environment, economy, and quality of life.
- OISC focuses on species that are not widely established on O'ahu and can still be controlled or eradicated.
- OISC partners include the Hawai'i Department of Land and Natural Resources, the Department of Agriculture, Honolulu Board of Water Supply and other municipal, state and federal agencies.

WHAT CAN YOU DO?

- **Stop the spread of seeds! Wash your boots, equipment and vehicles before using them in a new location.**
- Allow the OISC field crew on your property to survey for miconia if asked.
- Report all sightings to OISC at 266-7994
- **If found, do not remove or throw plants away! Call OISC, provide detailed location information and a photo (if possible), mark the plant and allow OISC to remove the plant for proper disposal.**



743 Ulukahiki Street
Kailua, HI 96734

Phone: (808) 266-7994 Fax: (808) 266-7995

E-mail: oisc@hawaii.edu Website: www.oahuisc.org

MISSION :

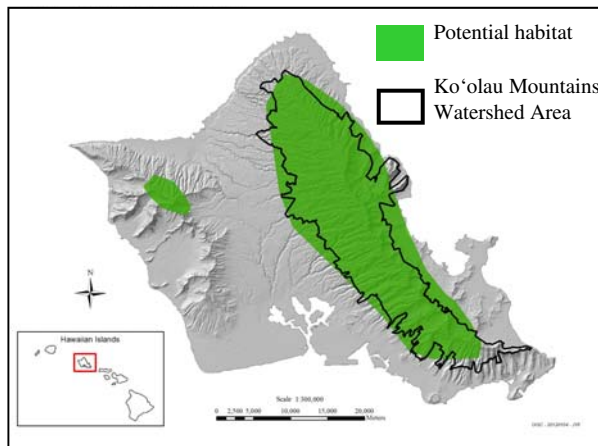
Prevent new invasive species infestations and eradicate incipient, high-threat species before they become widespread.

Priority Target:

Miconia tree (*Miconia calvescens*)

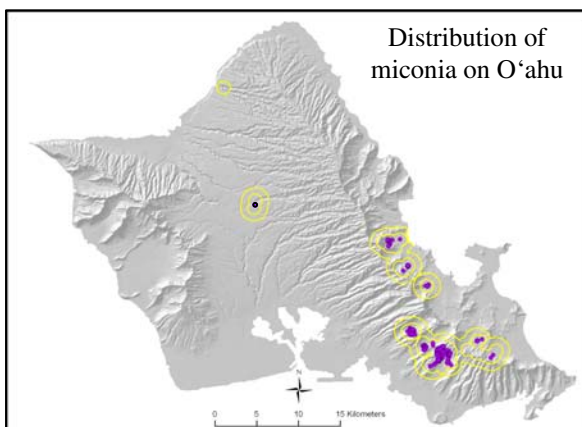


Miconia tree

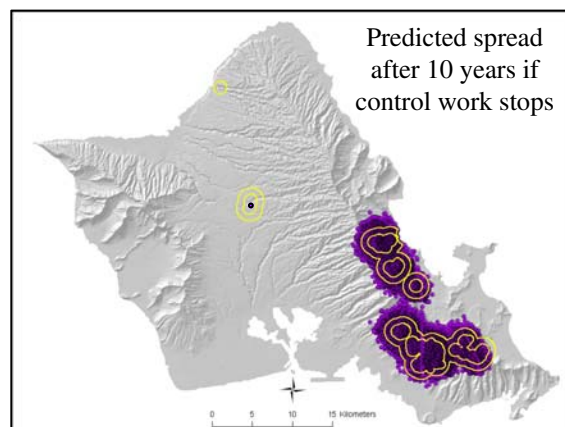


O'ahu cannot afford to lose its watershed forests. Potential habitat for miconia covers nearly the entire Ko'olau Mountains Watershed area.

**OISC is the only group controlling miconia on O'ahu.
What would happen if OISC stopped?**



Locations where OISC has removed miconia (purple dots) and areas around those locations (outlined in yellow) undergoing regular searches by OISC's field crew for new miconia seedlings. Miconia seeds can still germinate after 16 years in the soil.



Miconia's spread if no control takes place for 10 years. Miconia would cover the summit of the Ko'olau Mountains and damage the watershed. It would be beyond control and continue to spread further in the Ko'olau Mountains.