

DEVIL WEED CREW: GUIDE TO DATA TRACKING & SHARING



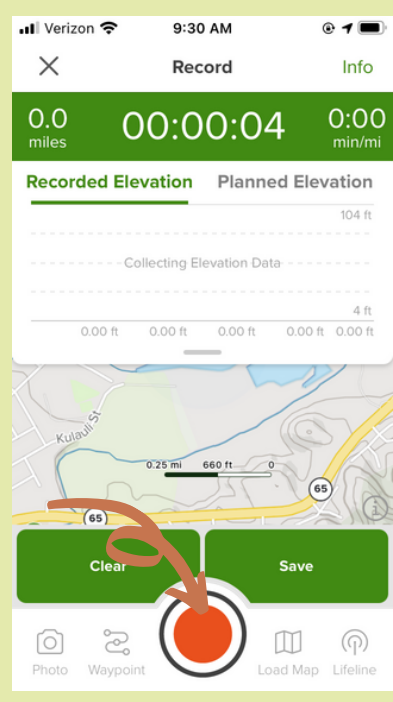
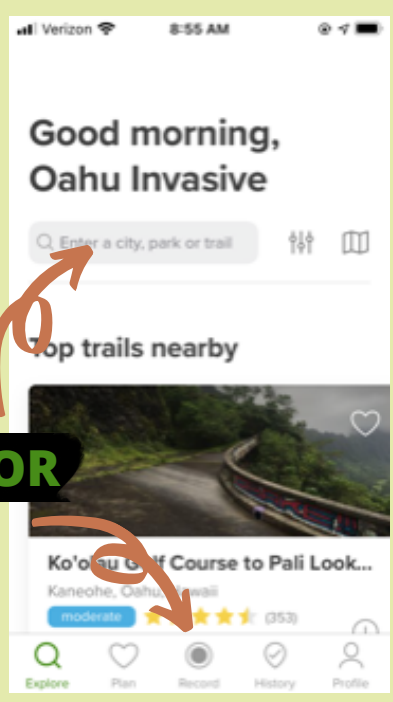
How to report geographic data anywhere on the island using the **AllTrails** free smartphone app.

1 OPEN THE "ALLTRAILS" APP ON YOUR PHONE

This app will record your survey and plant locations, which you can easily share with OISC.



2 RECORD YOUR HIKE/SURVEY



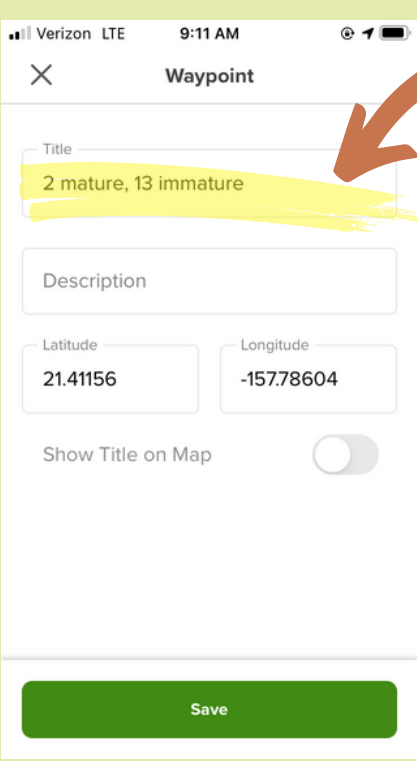
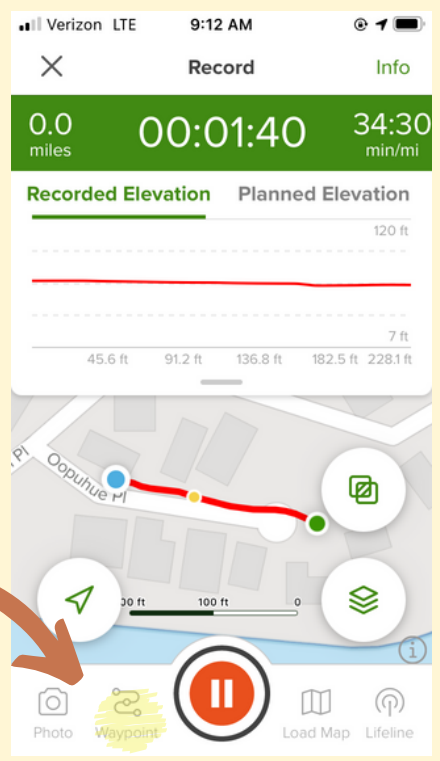
You can either "SEARCH" nearby trails or just select "RECORD" in the center bottom to lock your location.

When your ready to start hiking click the **red button** to begin recording.

3 RECORD PLANT LOCATIONS

Click the "WAYPOINTS" icon when you find plants.

This will record the coordinates of the plants you find and remove.



4 TITLE WAYPOINTS

Title each waypoint with the number of mature and immature plants you removed.

Continue hiking/surveying and collecting waypoints as you find plants.

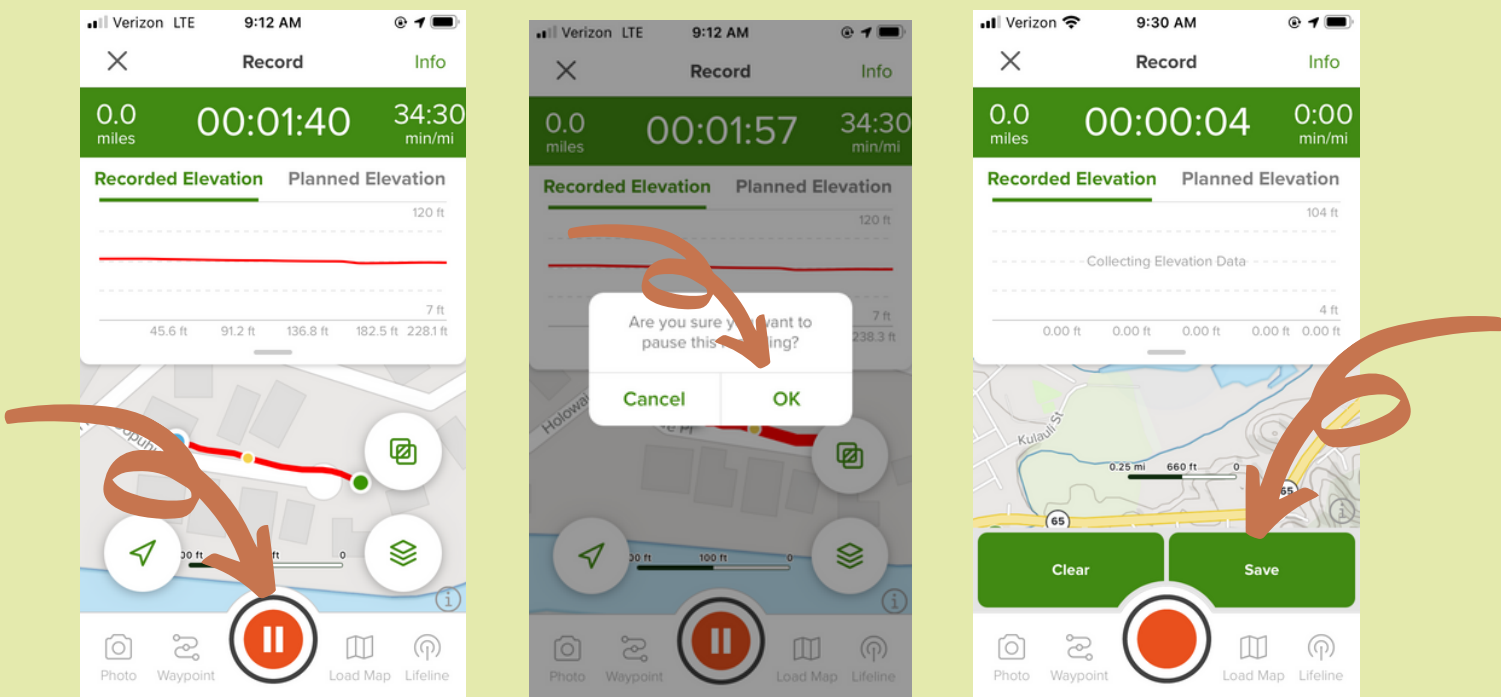
MATURE PLANT = FRUITS OR FLOWERS ARE PRESENT
IMMATURE PLANT = LEAVES ONLY



5

SAVE YOUR HIKE/SURVEY INFO

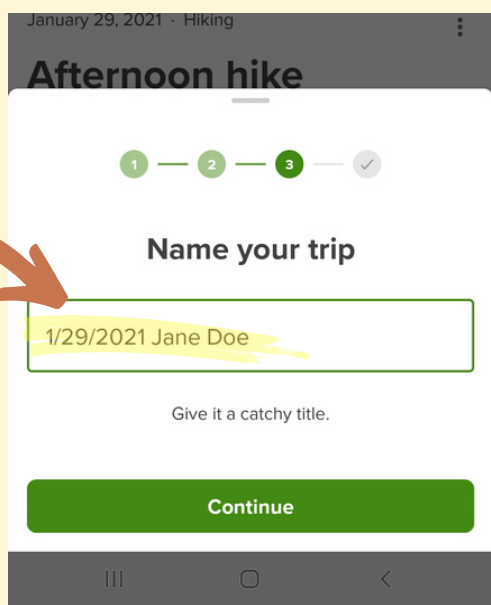
When finished, click "PAUSE" your recording, then "SAVE"



6

NAME YOUR HIKE

- Rate your hike.
- Add photos if you choose.
- **Name your hike** using the date & your name

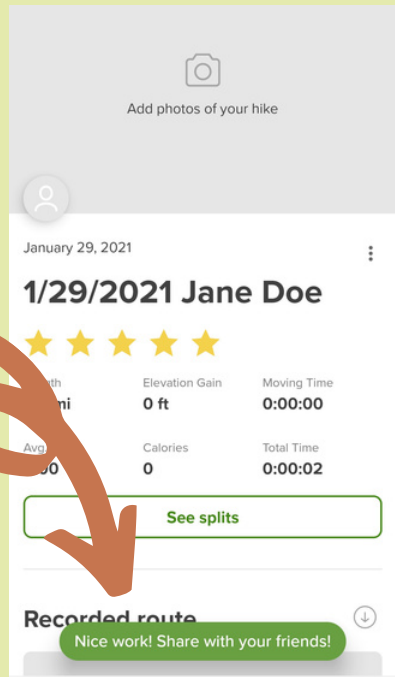


7

SEND YOUR DATA TO OISC

EMAIL: OISC@HAWAII.EDU
TEXT: (808) 286-4616

Send your data to OISC via email **or** text. Do this even if you don't find any plants on your hike. All data is valuable!



8

DECON, DECON, DECON...

Brush off your clothes and shoes...go home, kick back and relax!



Questions or Comments?

You can reach us anytime with email: oiscehawaii.edu

Join the Devil Weed Crew Community on Facebook:

www.facebook.com/groups/oahudevildeed

Visit the Devil Weed Crew webpage:

www.oahuisc.org/volunteer/devil-weed-crew/

