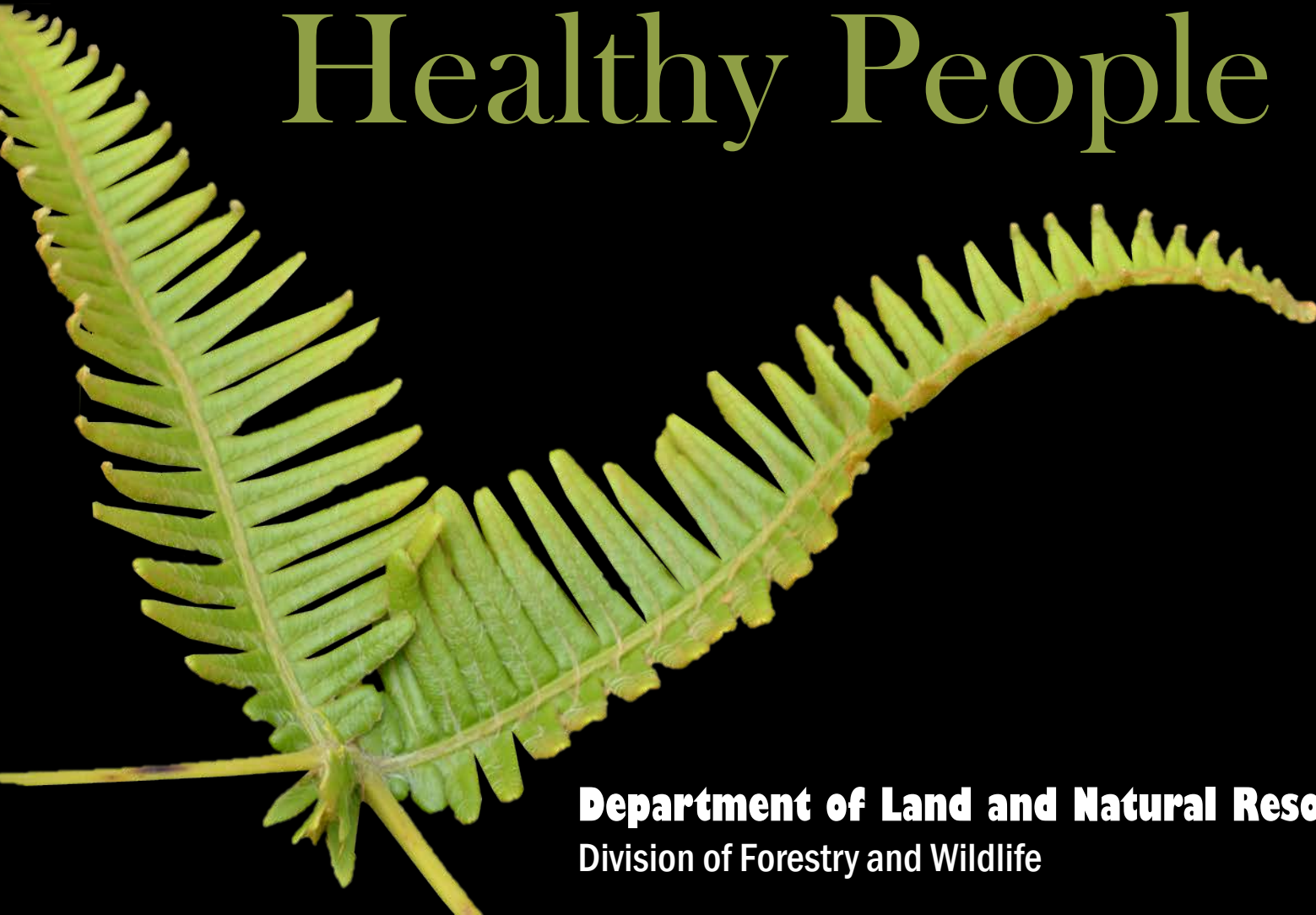


Healthy Forests, Healthy People



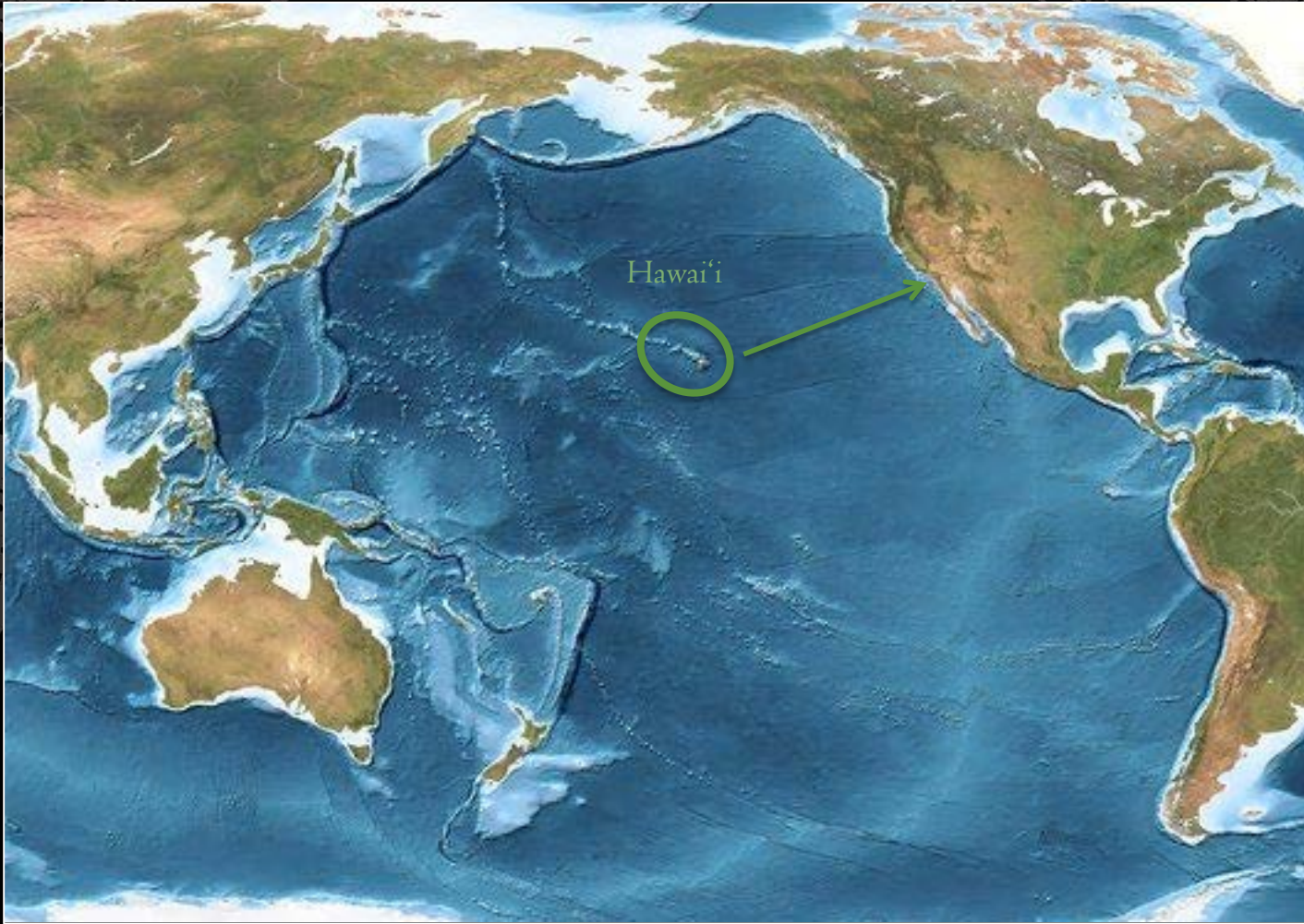
Department of Land and Natural Resources
Division of Forestry and Wildlife

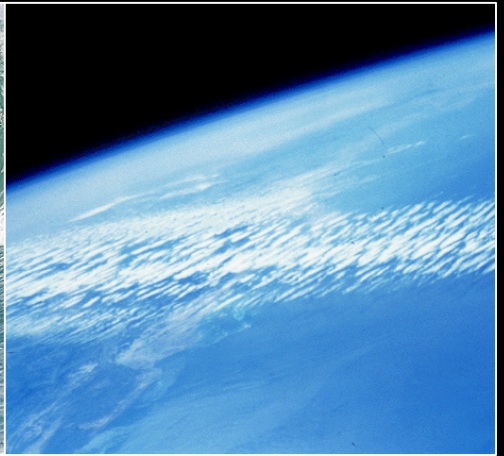
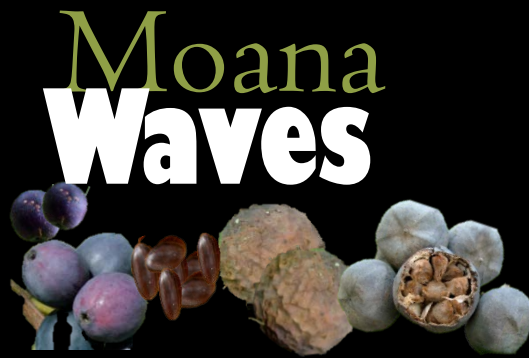


Connect Protect Respect



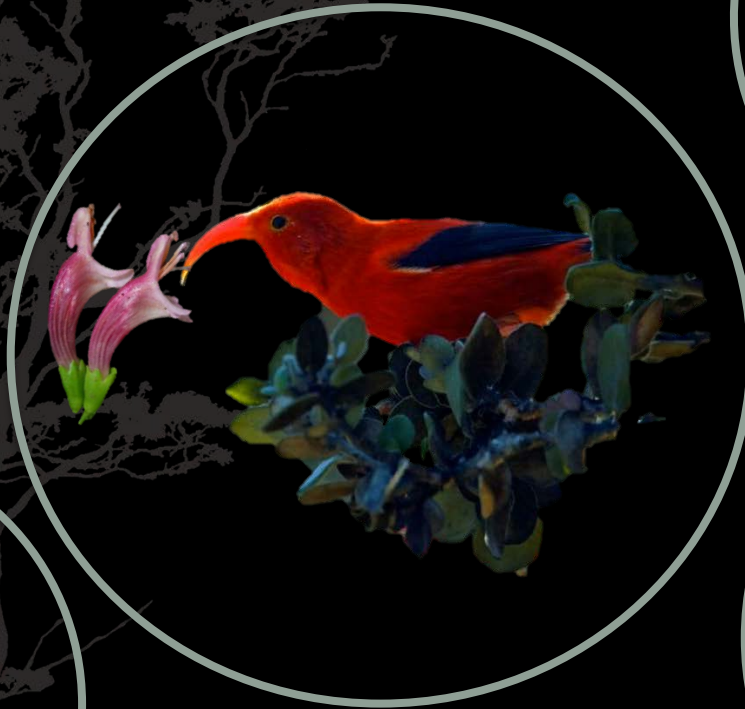
Biogeography and Natural History





Spectacular

Evolution



IUCN WCC

Honolulu 2016

- World's largest and most important conservation event – over 10,000 delegates.
- Has never been held in the US in the 60+ years of its existence.
- Opportunity to draw international attention to the unique natural resources of Hawaii.

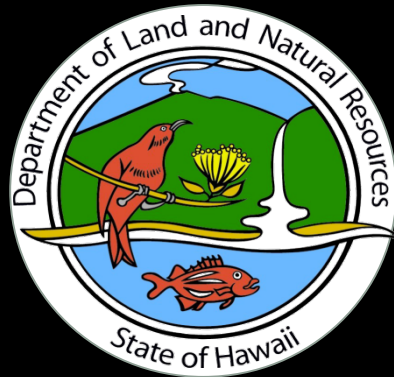
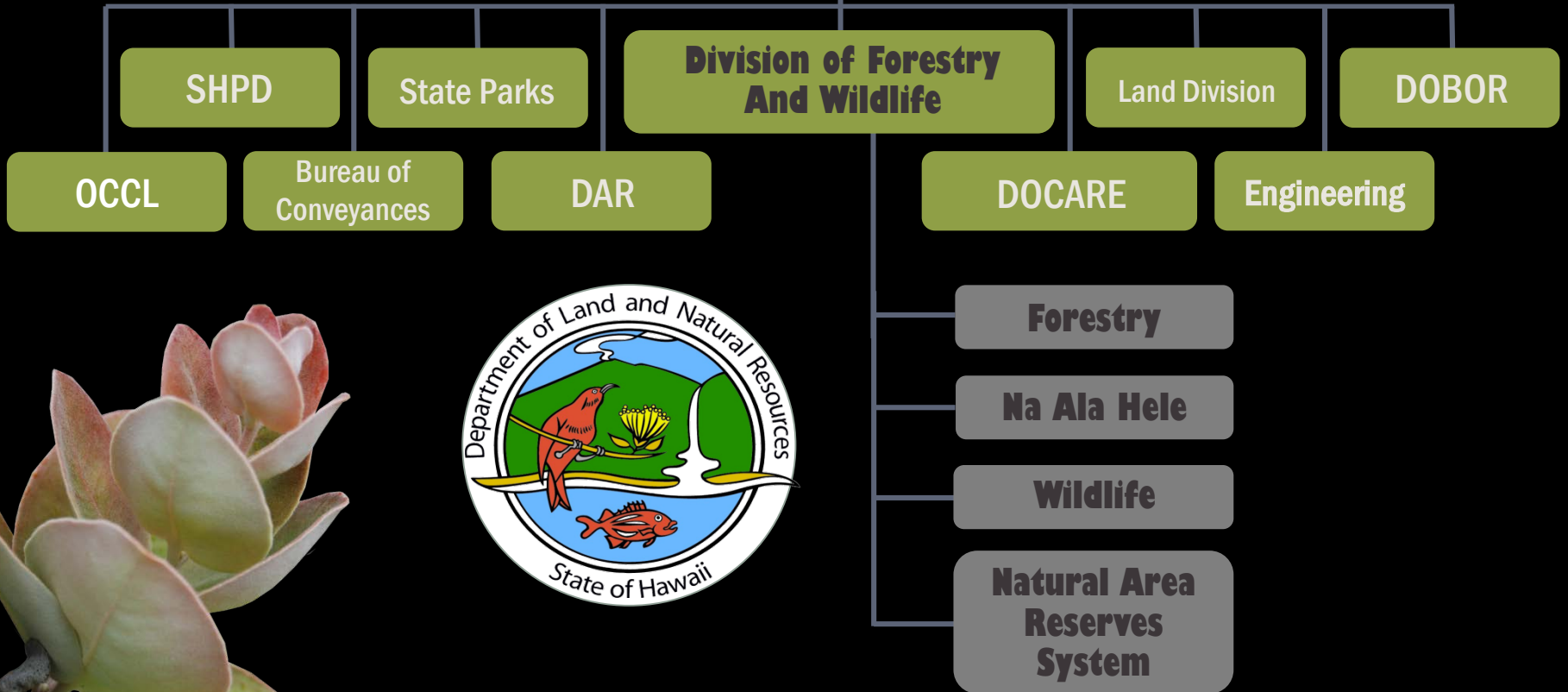


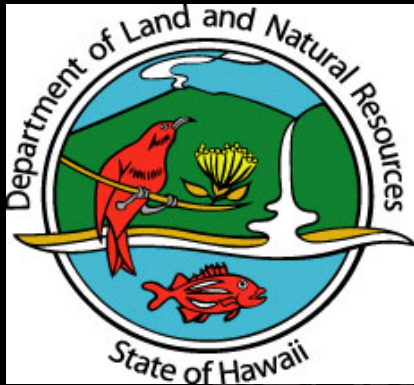
Connect



Board of Land and Natural Resources

Department of Land and Natural Resources



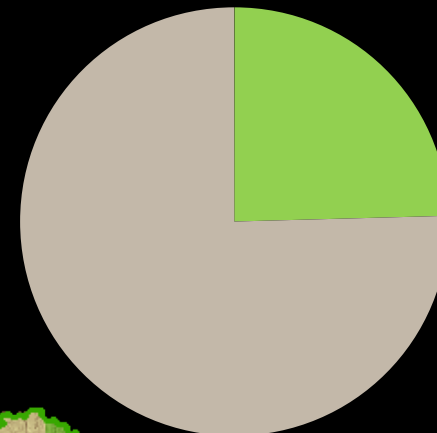


State of Hawai`i Department of Land and Natural Resources

Enhance, protect, conserve and manage Hawaii's unique and limited natural, cultural and historic resources held in public trust for current and future generations of visitors and the people of Hawai'i nei in partnership with others from the public and private sectors.



Nearly 25% of land statewide is managed by DOFAW



1,000,879 acres of the state is managed by DOFAW
4,073,725 acres of land in the state
24.6% of the state is managed by DOFAW

Division of Forestry and Wildlife

- Largest line division within DLNR
- Oldest Forest Management Agency in USA (1903) and 11th largest
- Manage nearly 1 million acres
 - Forest Reserves
 - NARS
 - Wildlife Sanctuaries
 - GMAs
 - Endangered Species
- Nearly 1/3 of all listed species in USA on 2/10 of 1% of land area





A man on the far left wearing a blue cycling jersey, black shorts, and a bright green helmet. He has a backpack and is smiling at the camera.

A man in the front row wearing a black t-shirt with 'alpha' and 'AMBC' printed on it, and patterned shorts. He has his arms crossed and is holding a black helmet.

A man in the front row wearing a brown long-sleeved shirt and camouflage shorts. He is making a 'shaka' hand gesture.

A man in the front row wearing a grey t-shirt and black shorts. He is holding a black helmet and standing next to the mountain bike.

A man in the front row wearing a black t-shirt with a yellow graphic and blue jeans. He is holding the handlebars of the mountain bike.

A man in the front row wearing a grey t-shirt with a circular logo and dark shorts. He is smiling and has his hands on his hips.

A woman in the middle row wearing a light grey t-shirt and dark pants. She is making a 'shaka' hand gesture.

A woman in the middle row wearing a white polo shirt and dark pants. She is smiling at the camera.

A woman in the middle row wearing a bright green tank top and dark shorts. She is making a 'shaka' hand gesture.

A man in the back row wearing a green polo shirt and sunglasses. He is talking on a mobile phone.

A man in the back row wearing a blue polo shirt. He is smiling and has his hands on his hips.

Forest Access and Use



Connecting Mauka to Makai

- Koa logs for Canoe clubs



Healthy Forest,
Healthy People



Management

Outreach & Education



Kauluwehi

04.19.2014 lei contest

A juried lei contest featuring traditional and contemporary categories. An opening reception and awards ceremony will be held at **Wailoa Arts and Cultural Center** on **April 19th**, the evening of lei submission from 5pm-7pm. **Everyone welcome!**

Entries Due on April 19th between 8am - 11am at Wailoa Arts and Cultural Center. See prospectus for details. For prospectus and entry forms visit us online at <http://dlnr.hawaii.gov/dofaw/education/kauluwehi/> or email Anya Tagawa anya.h.tagawa@hawaii.gov



lei workshops | March 8TH
April 5th
\$10 Workshop Fee - Materials Included
Registration Required | Ages 12 & UP

Registration Deadlines: March Workshop: FEB 28 | April Workshop: MAR 21

Learn sustainable picking practices, traditional lei styles, and enjoy the sights and sounds of beautiful native ecosystems.

To register or for more information contact Anya Tagawa at: anya.h.tagawa@hawaii.gov 423-4425

Proudly Hosted by:



Management

Habitat Conservation Plans



- Enable development of partnerships & innovative management solutions



- Protect developers from liability under the ESA



- Facilitate achievement of Hawaii's bold energy agenda: 70% clean energy by 2030



- Balance wildlife conservation with growth & development

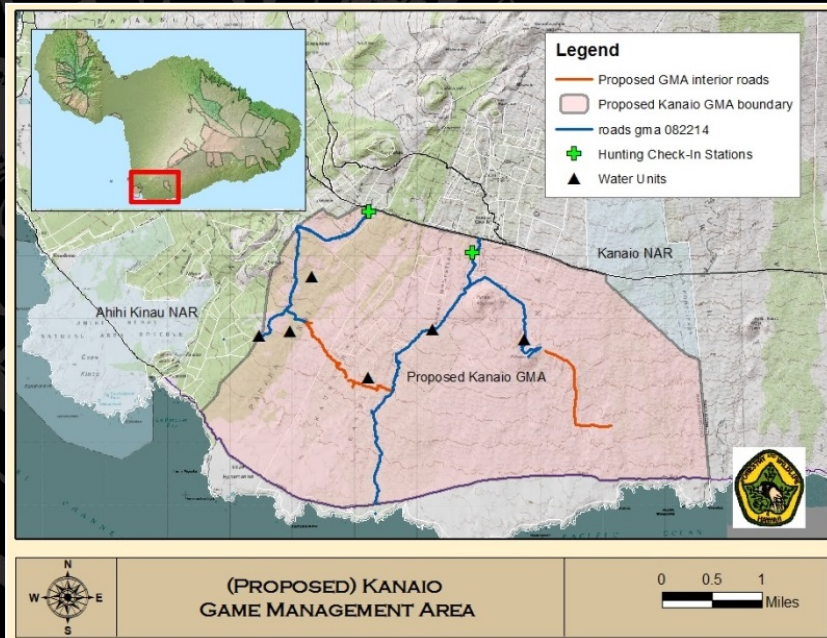


1.1 million towards conservation in FY2014

Management

Wildlife Access & Acquisition

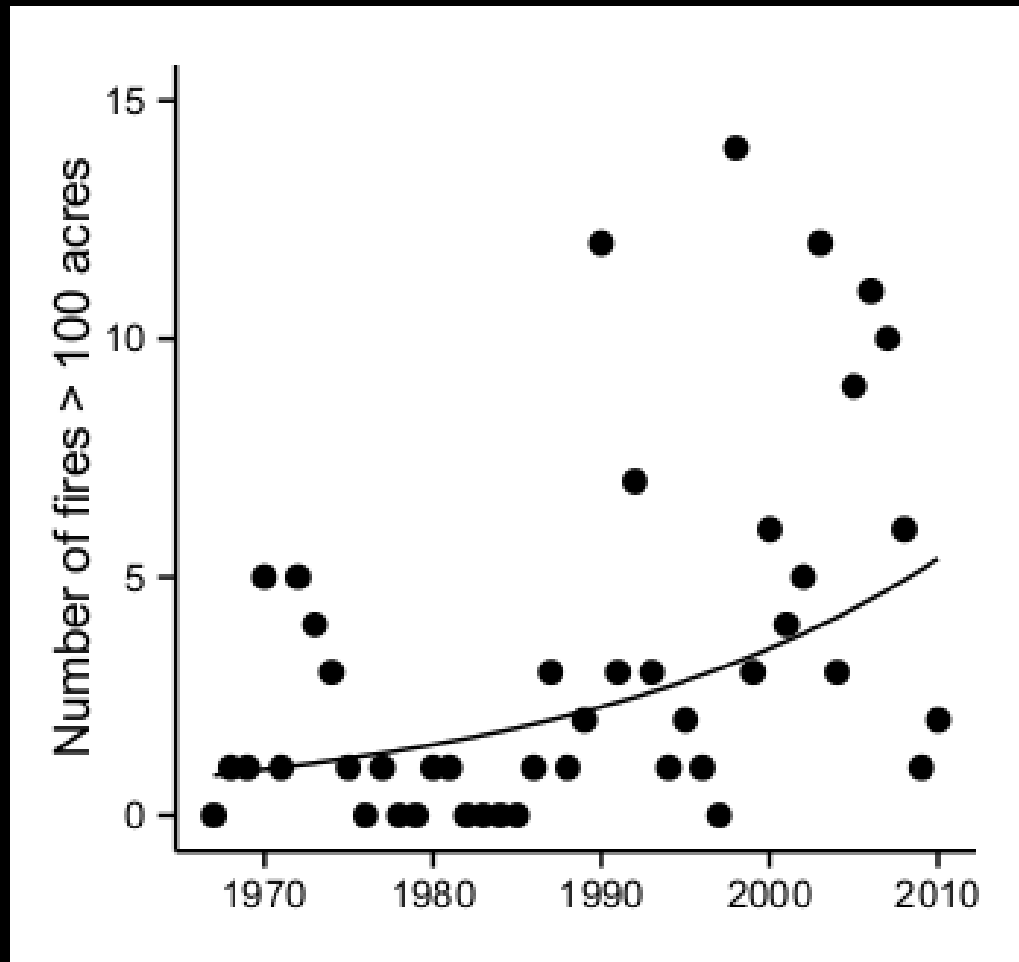
- Enhance opportunities for public hunting, outdoor recreation, and ecosystem protection.
- Acquire property interests and secure access agreements.
- Work with related programs and partners to leverage resources and coordinate transactions.



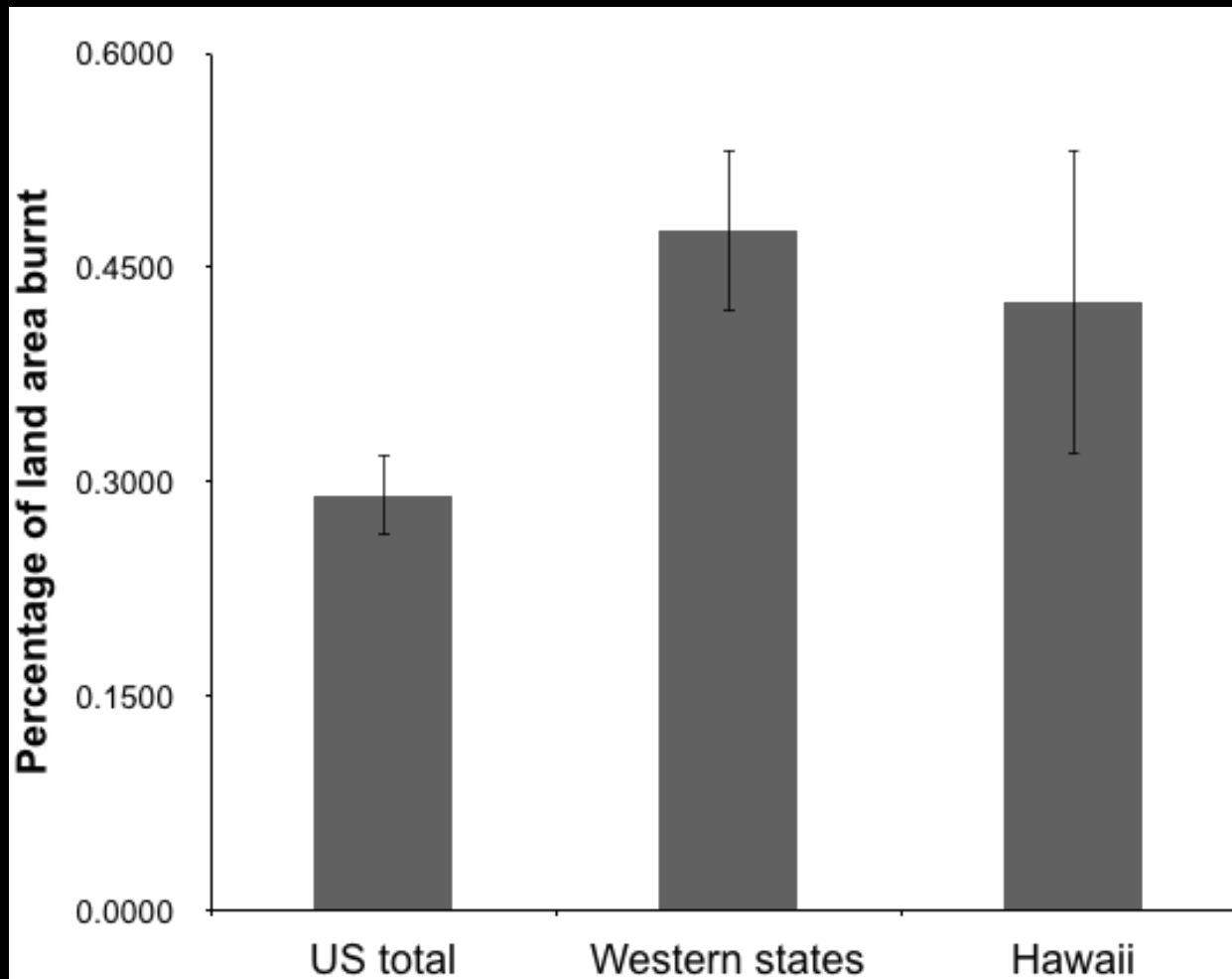
Protect



Hawaii has a wildfire problem

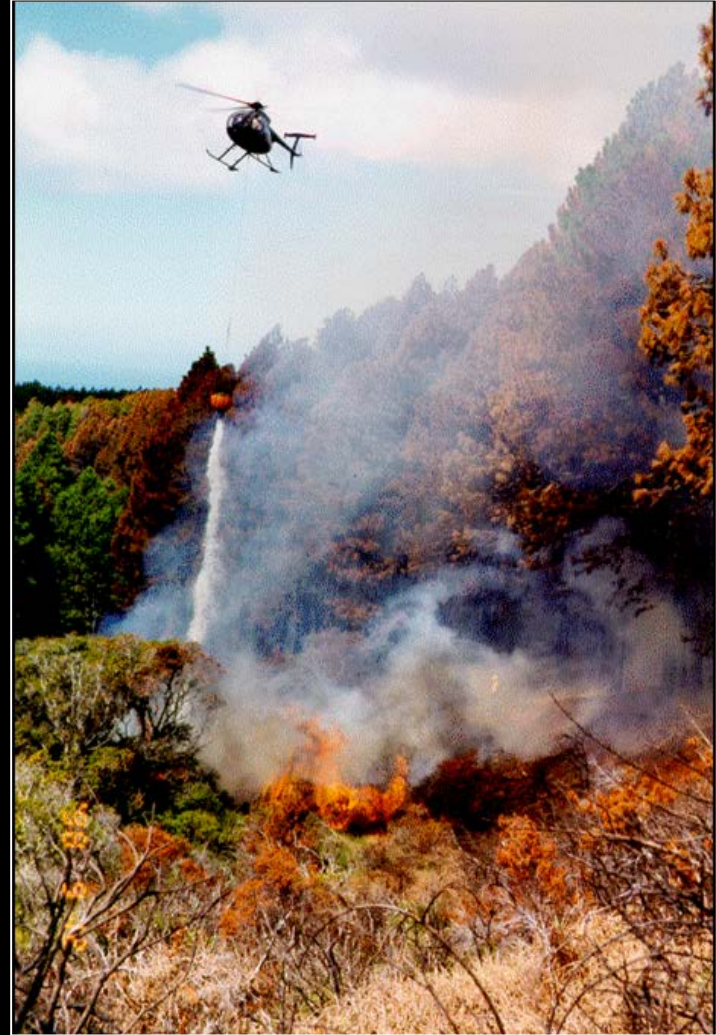


The national context



Management

Fire Control



Protection Program



Hawai'i's

Native Species



Native Songbirds | **35**



Native Flowering Plants | **956**



Native Ferns & Fern Allies | **161**

- 90% found only in Hawai'i.
- Most species restricted to a single island and limited to certain habitats.
- 78% of all extinctions in the US have occurred in Hawai'i.

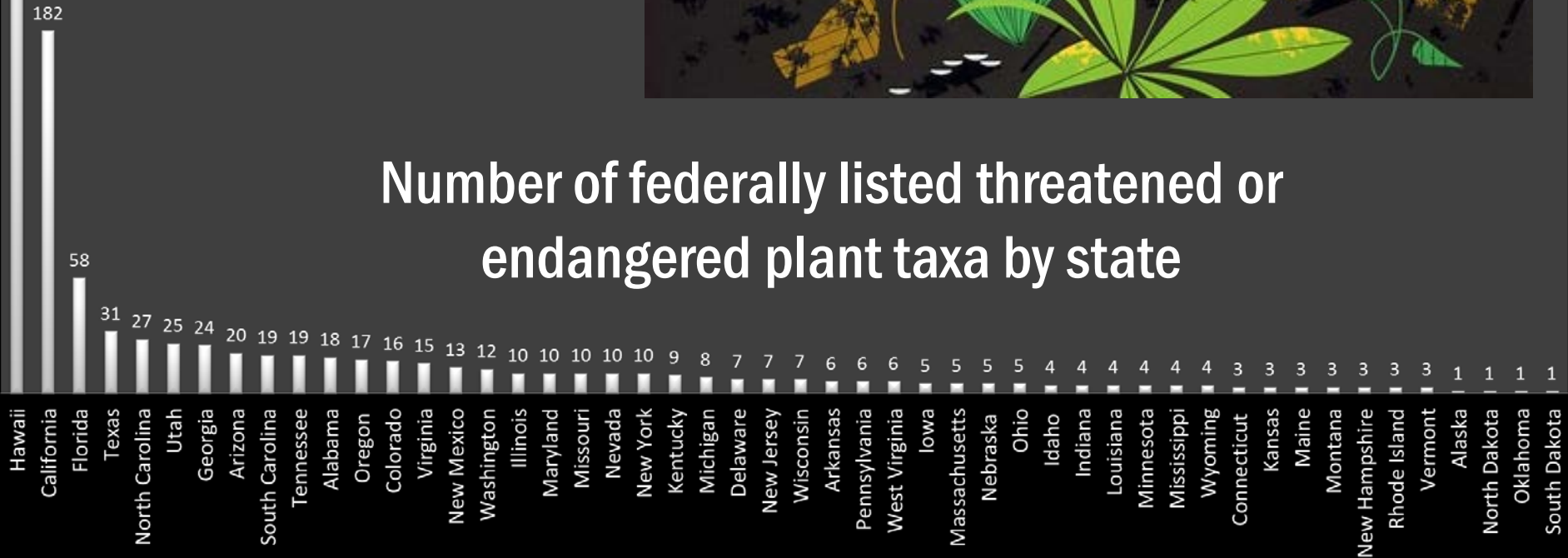


415

Hawai'i | 415



Number of federally listed threatened or endangered plant taxa by state



Management

Watersheds

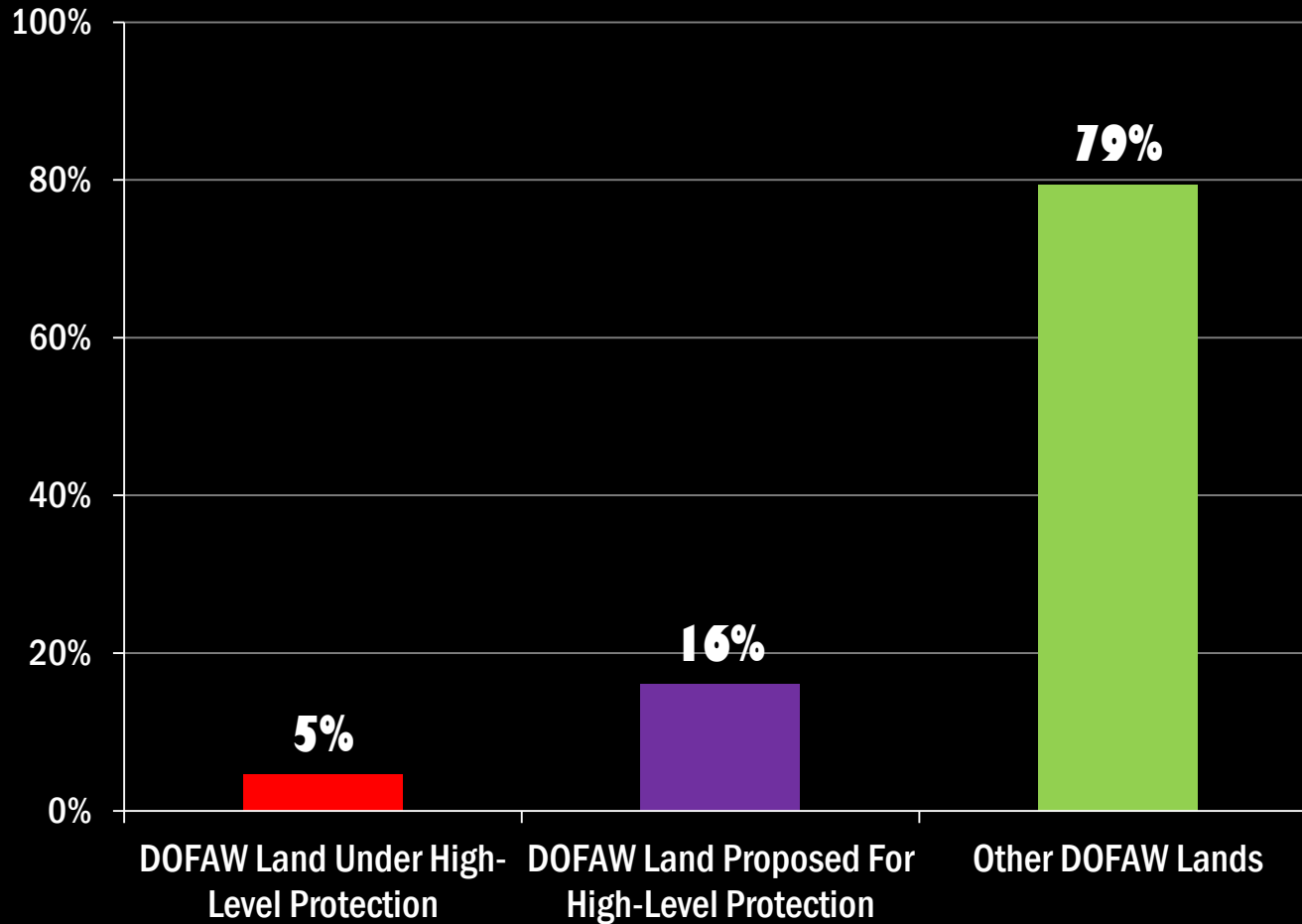


Before

After



Only 5% of DOFAW land is highly-protected



Arrival By Humans



Management

Invasive Species Control



Respect





Respect and Connect



Kilauea Eruption



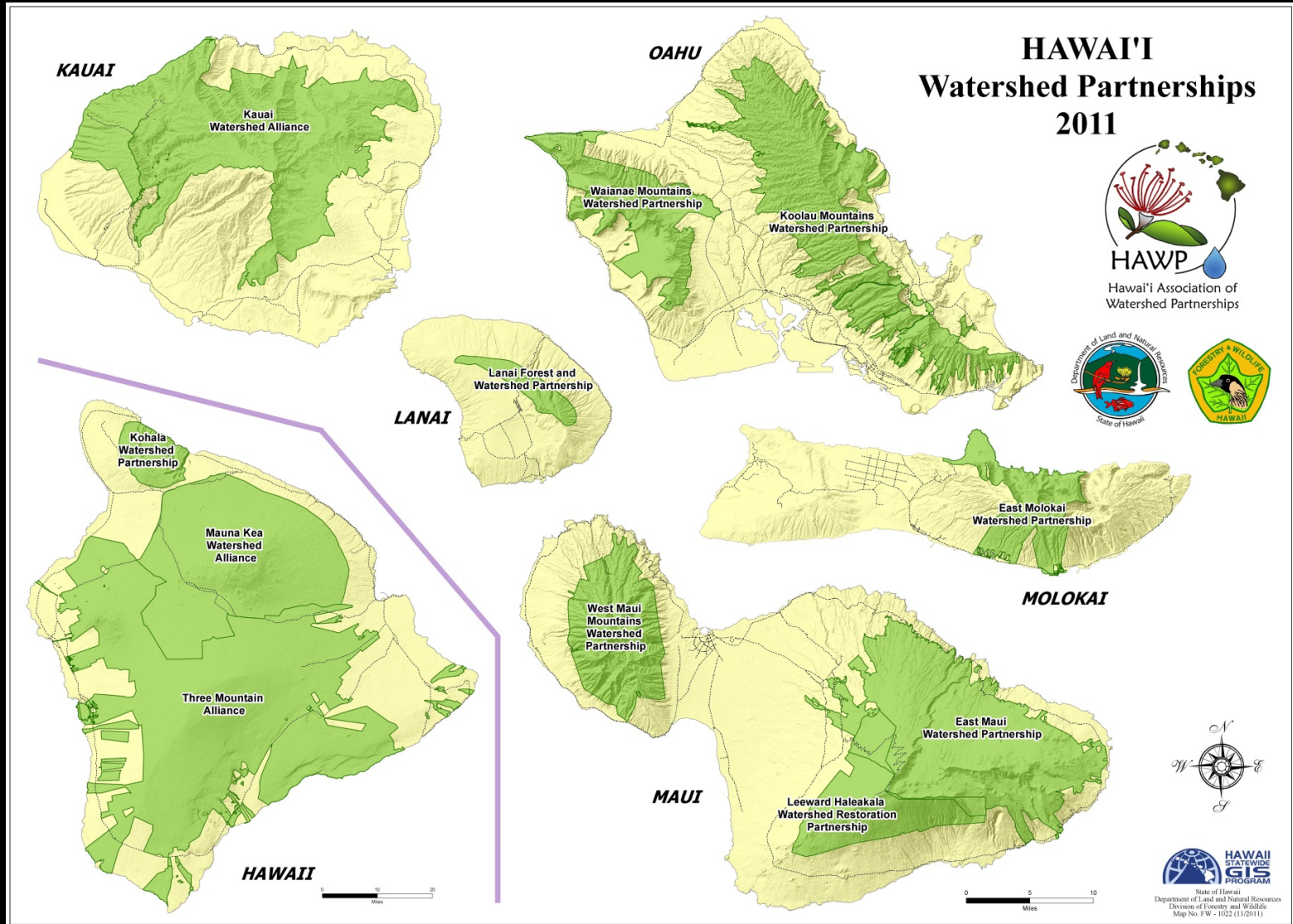
Landslides and Flooding



Hurricane Iselle



Partnerships







The Future

Our obligation is to the next generation...

