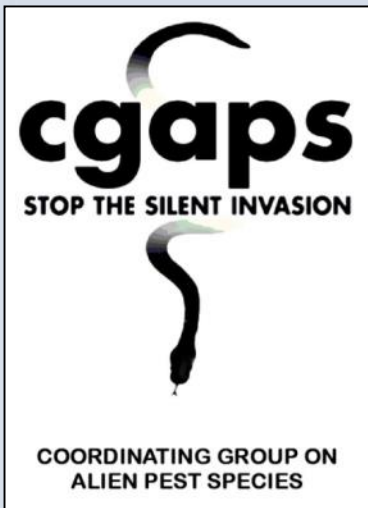


Overview of Invasive Species Issues in Hawai'i

January 13, 2015, Hawai'i State Capitol



Presented by:

Mark Fox

The Nature Conservancy

and

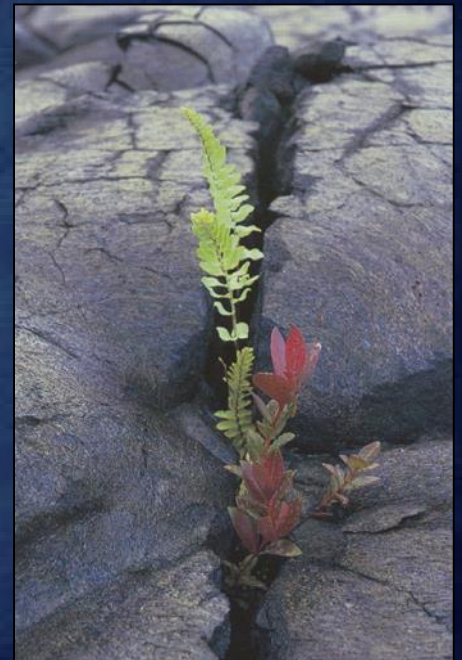
Christy Martin

Coordinating Group on Alien
Pest Species





Only those animals and plants that could survive a trans-oceanic voyage by air or waves were among the first colonizers.

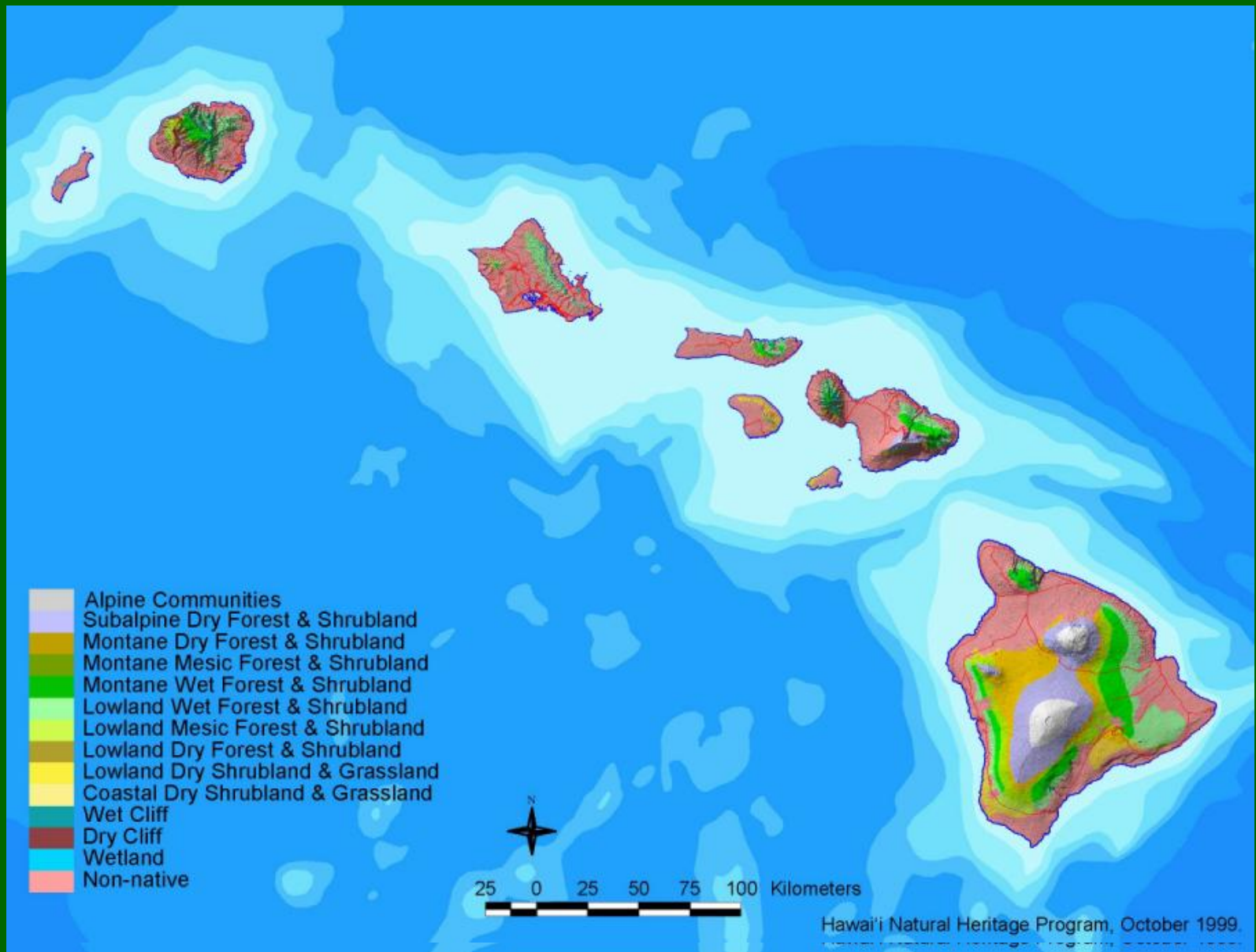




Here they developed into species like none other on the planet; co-adapted and balanced...

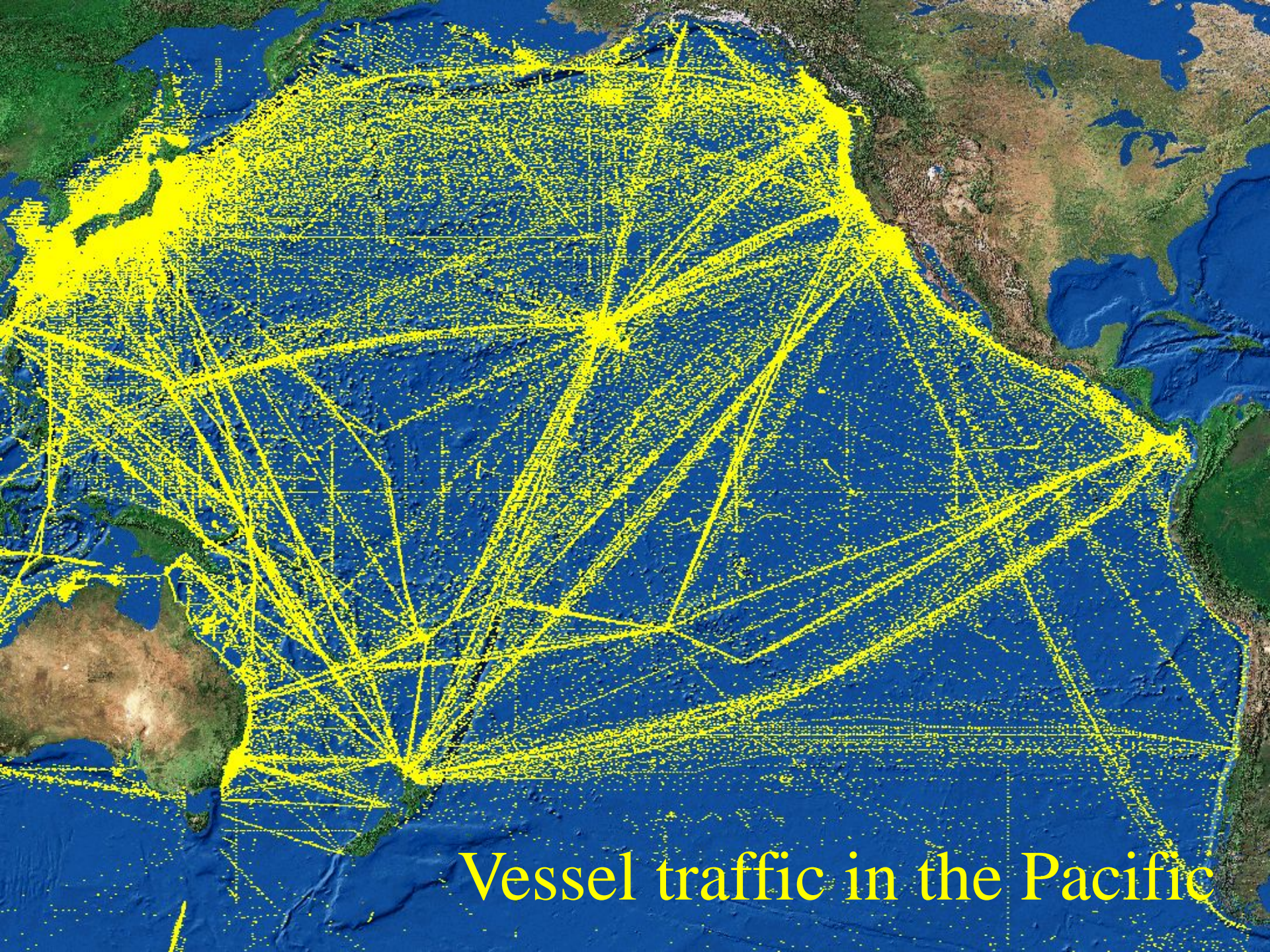


- Fresh water
- Recreation
- Food and medicine
- Cultural foundation
- Tourism
- Material products
- Carbon up-take



Today, Hawaii has lost half its native forest cover.





Vessel traffic in the Pacific



fruit fly



termites



coffee berry borer

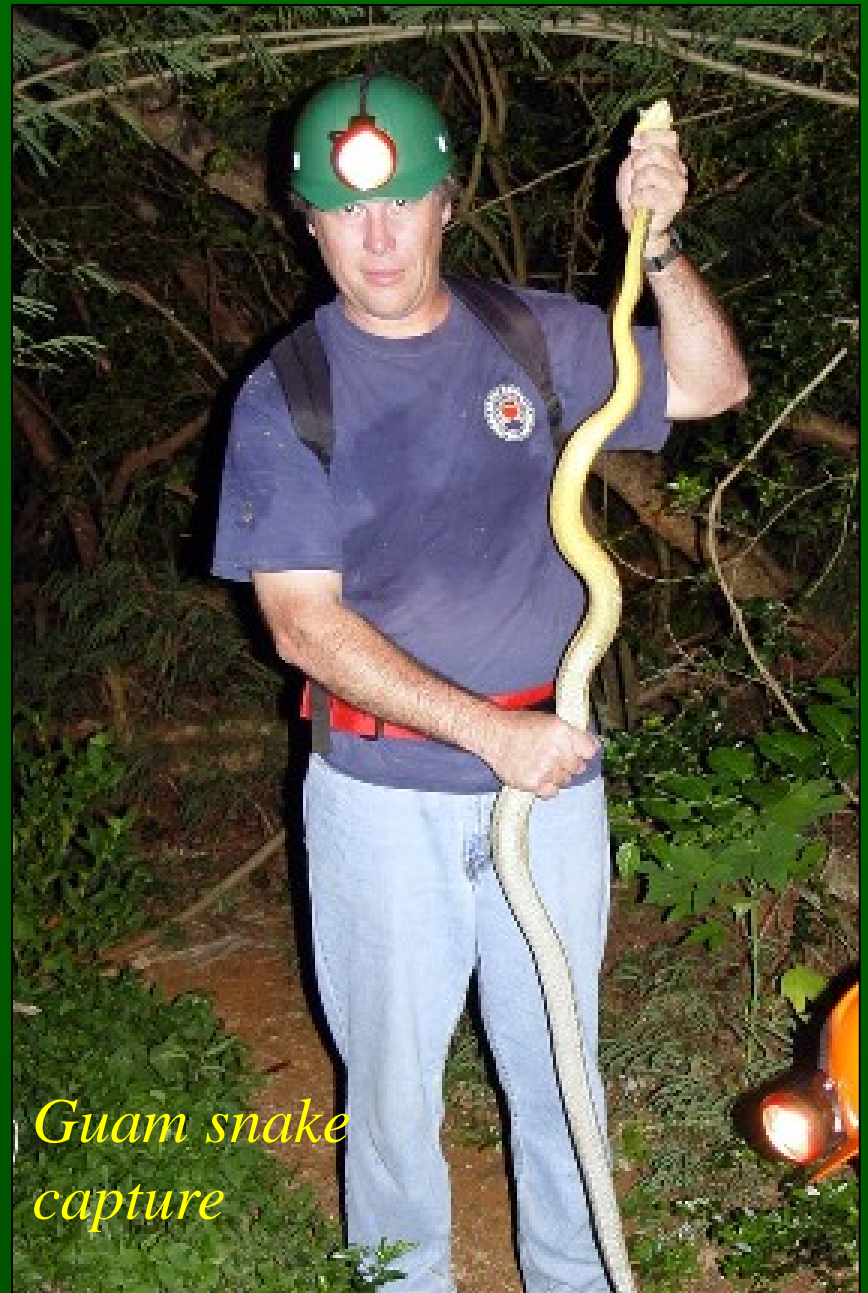
Invasive pests
already cost a
half billion
dollars annually.



LFA stings



Kāne'ōhe algae



Guam snake capture





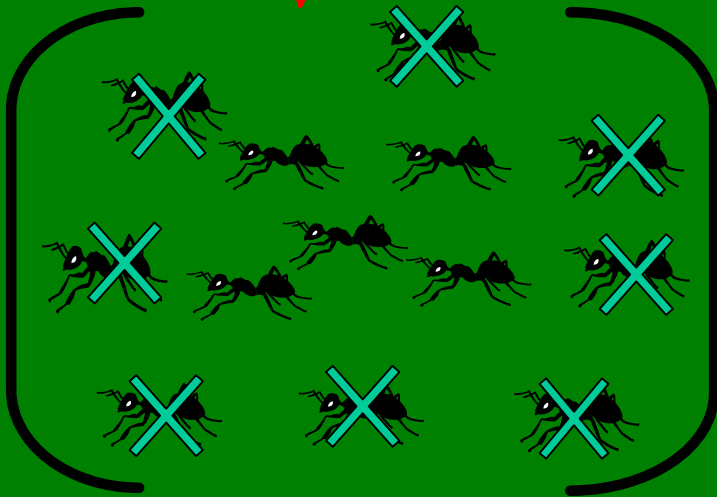
Healthy forests are our primary source of fresh water



- Prevention



- Early detection and rapid response



- Containment and control

- Outreach and research support all