

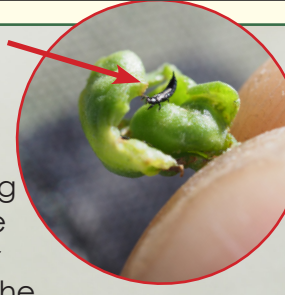


# SAVE OUR WILD NAIIO

## FROM INVASIVE NAIIO THRIPS

### **Naio Thrips** (*Klambothrips myopori*)

Naio thrips (sometimes called Myoporum thrips) are tiny, flying insects only 2 mm long that are new to O'ahu. They attack our native Naio plants by sucking the tissue out of the new leaves. Naio thrips cause severe damage and eventually kill the plants.



## HEALTHY NAIIO PLANTS



Photo: Forest & Kim Starr

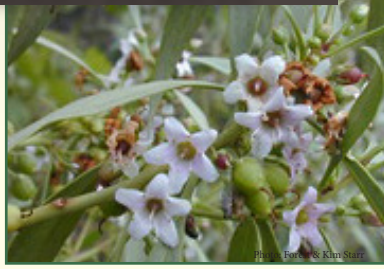


Photo: Forest & Kim Starr

Damage is more noticeable than the naio thrips. Look for curling, galling, bumpy leaves at the ends of the branches and report right away.

## INFESTED NAIIO PLANTS



Photo: Forest & Kim Starr



Photo: OISC

**REPORT NAIIO PLANT LOCATIONS & DAMAGED PLANTS**

**ONLINE:**  
[www.643PEST.org](http://www.643PEST.org)

**EMAIL OISC:**  
[oisc@hawaii.edu](mailto:oisc@hawaii.edu)



For more info: [www.oahuisc.org/naio-thrips](http://www.oahuisc.org/naio-thrips)



# SAVE OUR WILD NAIIO

FROM INVASIVE NAIIO THIRIPS

## Naio →

(*Myoporum sandwicense*) is a native Hawaiian plant that has been used widely in landscaping. In the wild, naio are important habitat for nesting albatross and shearwaters, Hawai'i's endangered yellow-faced bees, and native forest birds like the 'Amakihi and 'Elepaio.



Photo: Pacific Rim Conservation

## SAVING OUR WILD NAIIO

Protecting wild naio populations is a priority. Landscaped naio plants provide harbors for thrips to move around the island. Neither organic or pesticide treatments are effective for prevention.

Removal is needed to stop the spread.

- Remove urban/landscaped plants *BEFORE* they get infested...we'll replace it with a native plant.
- If you decline to remove your uninfested plant, monitor every week for damage to leaves.
- Report damaged leaves immediately to the Oahu Invasive Species Committee (OISC) for removal and safe disposal.
- Do NOT plant naio. For a list of alternatives, visit: [www.oahuisc.org/naio-thrips](http://www.oahuisc.org/naio-thrips)
- Do not move naio between islands.

### REPORT NAIIO PLANT LOCATIONS & DAMAGED PLANTS

ONLINE:  
[www.643PEST.org](http://www.643PEST.org)

EMAIL OISC:  
[oisc@hawaii.edu](mailto:oisc@hawaii.edu)



For more info: [www.oahuisc.org/naio-thrips](http://www.oahuisc.org/naio-thrips)