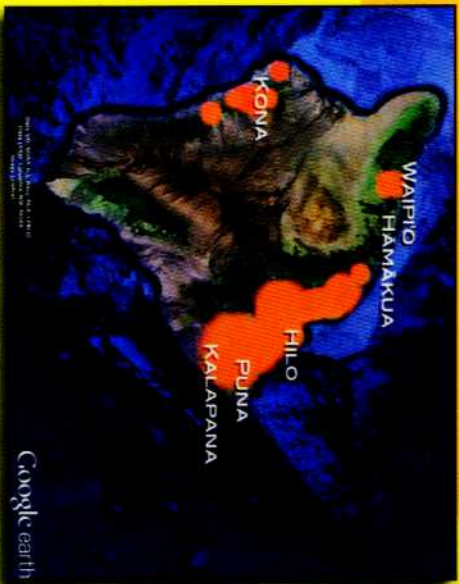


## What is the Little Fire Ant?

Little Fire Ants (LFA) are a new, invasive stinging ant that will spread across the Hawaiian Islands if we don't take action now.

LFA infest yards, houses, farms and forests. Their powerful stings harm people and wildlife. LFA sting the eyes of pets, leading to blindness. LFA damage crops, food production, and the economy everywhere they have spread. LFA alter (or impact) people's lives because their stings are unavoidable.



Hawaii Island LFA infested areas (2014)

LFA was discovered in the Puna area of Hawaii Island in 1999 and has since spread, hidden in plants, logs, greenwaste, gravel, and even cars. Interisland spread has been somewhat limited by plant treatment and inspection, but LFA continue to spread.

In December 2013, LFA were discovered in hapu logs at nurseries and garden shops on Oahu and Maui, and in landscaping on Lanai. Many of the hapu sold to the public remain unaccounted for. There are many other pathways that LFA may be transported and introduced to other islands.

A multi-agency response has been launched to survey and treat potential LFA locations not found on Hawaii Island. Everyone needs to test their homes and yards and report possible LFA. We need your kokua.

## Detect - Report - Stop the Little Fire Ant

### DETECT

**HDOA locations for dropping off or mailing samples:**

**Kauai:** 4398A Pua Loke Street  
Lihue, HI 96766

**Oahu:** 1428 S. King St  
Honolulu, HI 96814

**Maui:** 635 Mua Street  
Kahului, HI 96732

**Molokai:** (call 643-PEST for instructions)  
**Hawaii Island:** Hawaii Ant Lab / HDOA  
16 E. Lanikaula St  
Hilo, HI 96720

### REPORT

**Immediately report suspected LFA to any of the following places:**

**Hawaii Department of Agriculture  
Statewide Hotline: 643-PEST (7378)**

**Kauai Invasive Species Committee: 821-1490**

**Oahu Invasive Species Committee: 266-7994**

**Maui Invasive Species Committee: 573-6472**

**Molokai Invasive Species Committee: 553-5236**

**Big Island Invasive Species Committee: 933-3340**

**Hawaii Ant Lab: 315-5656 (Hawaii Island)**

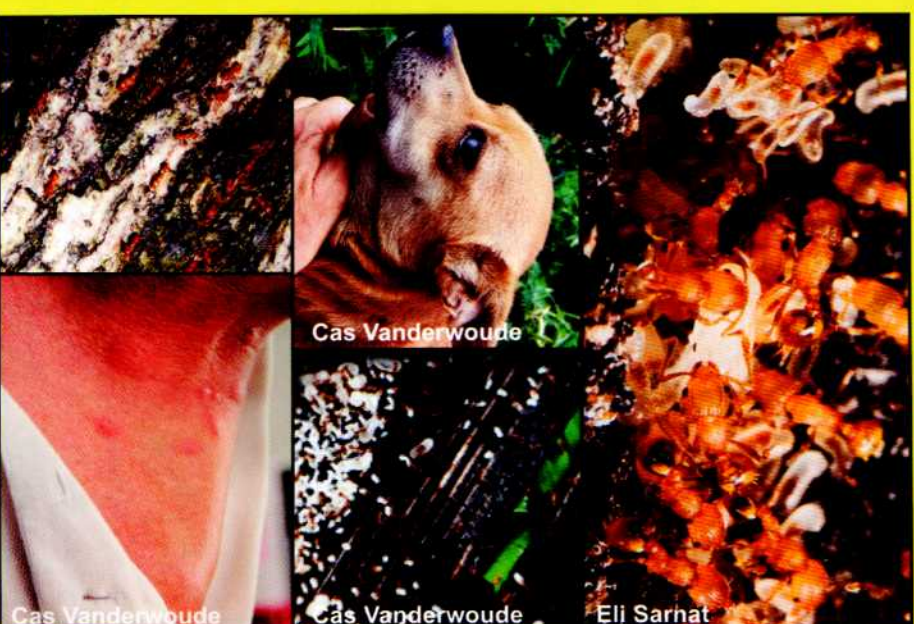
### LEARN MORE

For more information about LFA, visit:  
[www.littlefireants.com](http://www.littlefireants.com) or [www.LFAHawaii.org](http://www.LFAHawaii.org)

*Partners and Contributors:* Hawaii Department of Agriculture, Department of Land and Natural Resources, US Fish & Wildlife Service, Hawaii Ant Lab, Hawaii Invasive Species Council, Coordinating Group on Alien Pest Species, the Invasive Species Committees of Hawaii, College of Tropical Agriculture and Human Resources, University of Hawaii, The Nature Conservancy, Oahu Army Natural Resources Program, Pacific Cooperative Studies Unit, City and County of Honolulu,

## Little Fire Ant

*Wasmannia auropunctata*



## Detect - Report - Stop Little Fire Ant!



# Protect Your Family

## DETECT

Supplies: peanut butter, disposable chopsticks, zip top bags, and a pen.



1. Place sticks with a **thin** smear of peanut butter\* every few feet in and around plants in your yard, garden, and lanai. Focus on shady, moist areas, the bottoms of pots, and where plants' leaves meet the stem.

\*Regular peanut butter, not natural or fat free.  
\*\*For those with a peanut allergy, use pieces of luncheon meat.



2. Leave the sticks in place for **1 hour** during the cool part of the day.

3. **Check sticks** without moving them. Collect the stick if:

- The ants are uniformly orange/red and VERY small.
- You are unsure about the ants.

4. Very carefully place it directly into the bag (so ants don't fall off).

5. Seal the bag, label it with your name, address and phone number, and **put it in your freezer overnight** to kill the ants.



### How to identify LFA:

- Tiny ants:  $\frac{1}{16}$  inch, as long as a penny is thick
- Orange-red in color
- Slow-moving



### Look-alike: Tropical fire ant

- Common larger stinging ant
- Widespread
- Builds ground nests in sunny, dry areas
- Nests have distinct openings



### An entire LFA colony can fit in macadamia nut shell

- LFA don't form mounds
- Nests don't have distinct openings
- Nests in moist, shady areas, in trees, under tree bark, under rocks, within logs & in leaf litter

## REPORT

Call the Hawaii Department of Agriculture (HDOA) statewide **pest hotline at 643-PEST** to report that you might have LFA. Drop off (or mail) the sample (zip top bag with frozen ants) at any HDOA office (see back for locations).

HDOA will contact you when the ants are identified. **Do not disturb the ants and do not control or treat the area.** This will make the nests difficult to find and possibly spread them further.

## STOP LFA

If HDOA confirms you don't have LFA, congratulations and thank you! Remain vigilant. **Always quarantine and test any new plants,** cut flowers, plant materials, mulch, soil and other items.

**If you do have LFA, call HDOA** about what to do next. We can help you control it, but we need your help to map and control every location of LFA to help prevent it from spreading.